



UNLOCKING CANADA'S COPPER POTENTIAL

INVESTMENT HIGHLIGHTS

SCALE

2.7km mineralized corridor within **30km** of 100% owned brownfield trend

GRADE

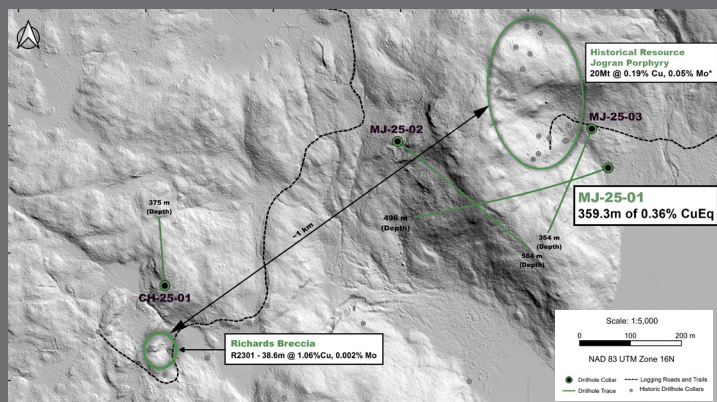
50m **-1% copper**, bornite rich preserved porphyry, historic production **>2.5%**

INFRASTRUCTURE

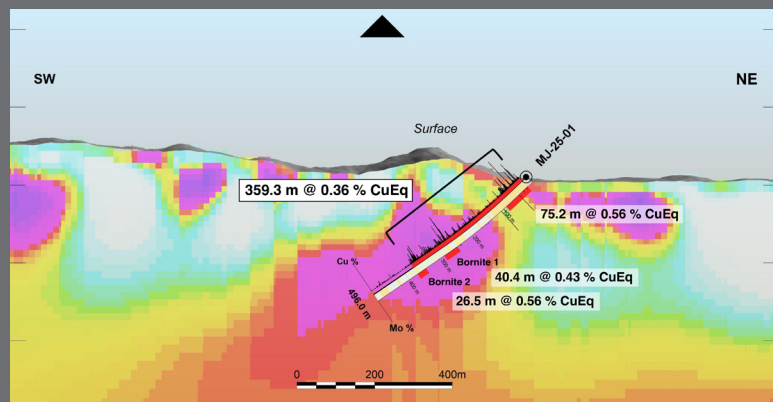
10km from rail, **1 hour** north of port, **20 min** off the highway

TEAM

Entrepreneurial team with strong technical expertise in copper and exceptional access to capital



2025 DIAMOND DRILLING PROGRAM



CROSS SECTION HOLE MJ-25-01

INAGURAL WORK PROGRAM

Phase I diamond drilling (4 holes, 1,789m) tested a 2.5km x 1.5km x 1.5km area

- **359.2m at 0.36% CuEq** in first drill hole from near surface, including **75m at 0.56% CuEq** with multiple bornite/chalcopyrite-rich zones
- Drilling confirmed a well-preserved, near-surface potassic alteration system, indicative of a copper-rich porphyry
- Mineralization starts at ~14m depth and extends to 373m, remaining open laterally and at depth
- Results correlate with 5km x 3km IP survey, 3D IP/ZTEM geophysics and historic mineralization, validating the exploration model

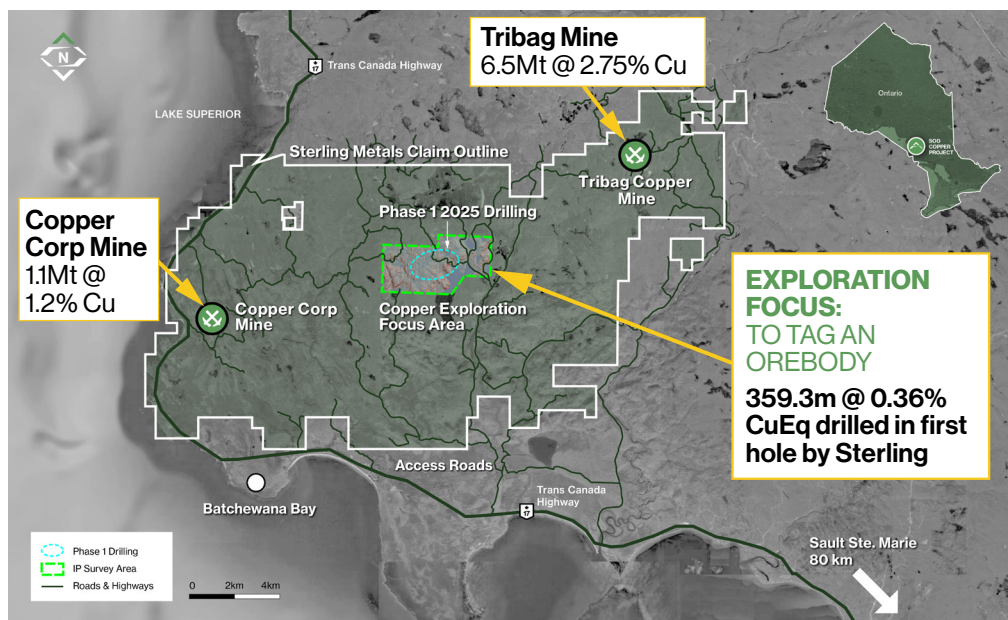
UPCOMING CATALYSTS

Additional assay results and Phase II drilling

SOO COPPER PROJECT

25,000ha high-potential brownfield copper-moly-silver-gold project associated with the Midcontinent Rift in Ontario, Canada, which until 2021 had never been fully consolidated.

Recent porphyry and breccia drill holes as well as past copper production from two mines suggest the potential for larger intrusion related copper mineralization.



BOARD OF DIRECTORS

Mark Goodman Chairman
Mathew Wilson Director
Stephen Keith Director
Dr. Neil O'Brien Technical Advisor
Dr. Stephen Piercey Technical Advisor
Richard Patricio Advisor
Mark Raguz Advisor

MANAGEMENT

Mathew Wilson CEO
Jeremy Niemi SVP Exploration and Evaluation
Dennis Logan CFO
Chris Irwin Corporate Secretary

CONTACT

Tel: (416) 643-3887
info@sterlingmetals.ca
www.sterlingmetals.ca

@sterlingmetals
 Sterling Metals Inc.

Scan to Visit Website:



HISTORICAL HIGHLIGHTS NOTES:

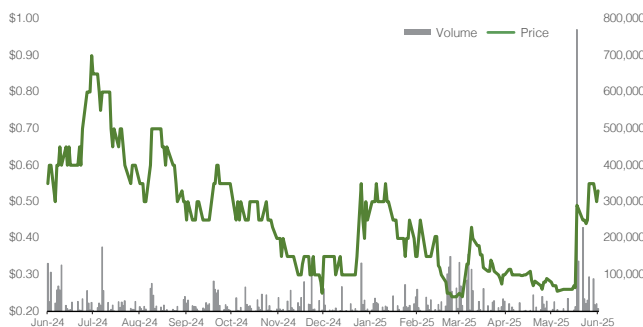
¹ Perello J, Sillitoe R.H., and Creaser R.A., 2020, Mesoproterozoic porphyry copper mineralization at Mamainse Point, Ontario, Canada in the context of Midcontinent rift metallogeny, Ore Geology Reviews 127
² Independent Technical Report entitled "Technical Report on the Copper Road Property", dated April 29, 2024, prepared by Kelly Malcolm, PGeo., for Sterling Metals Corp.

This estimate is a "historical estimate" as defined under NI 43-101. A Qualified Person has not done sufficient work to classify the historical estimate as current mineral resources and Sterling Metals is not treating the historical estimate as current mineral resources.

CAUTIONARY NOTE REGARDING FORWARD-LOOKING INFORMATION

This fact sheet is intended to be strictly informational. Sterling Metals Corp. ("Sterling Metals" or the "Company") reserves the right, at its sole discretion, to modify all or any part of this presentation without any liability or notification to any person. This presentation includes statements which may be considered forward-looking. These forward-looking statements are based largely on the expectations of management of the Company as at the date hereof and are subject to uncertain events and circumstances which are beyond the control of the Company. Actual results could differ materially from those anticipated. You acknowledge that any reliance on or use by you of this information shall be at your own risk. In no event shall the Company, its directors, officers, employees, agents or advisors be liable for any damages of any kind arising out of or relating to the use of this presentation, including, but not limited to, any loss of income or profits, incidental, special, indirect or consequential or any similar losses or damages, whether or not advised of the possibility of damages, and on any theory of liability, arising out of or in connection with the use of the information contained herein. This document does not constitute, nor should be construed as, an offer or solicitation of an offer for the purchase of any securities of the Company, nor investment advice or an offering memorandum. Readers should review all of the Company's public disclosure including the technical report on its property. No securities commission or similar authority or stock exchange in any jurisdiction has in any way passed on any of the information contained herein.

STOCK PERFORMANCE



CAPITAL STRUCTURE

Share Price (June 15, 2025)	C\$0.54
52-Week Low/High	C\$0.24 - C\$1.00
Basic Shares Outstanding ¹	30.9M
Options ²	3.0M
Warrants ³	3.1M
FD Shares Outstanding	37.0M
Basic Market Capitalization	C\$16.7M
Cash & Cash equivalents (Mar. 31, 2025)	C\$2.6M
Subsequent Financing (Completed Mar. 25, 2025)	C\$1.5M
Debt	None

¹ Based on public disclosure as of April 21, 2025, and includes a \$1.5M financing of 6,082,000 private placement units completed on March 25, 2025.

² Based on public disclosure as of March 26, 2025 with an average exercise price of \$0.63.

³ Includes 98,213 warrants at \$0.65 expiring October 23, 2025 and 3,041,000 warrants and 33,000 broker warrants at \$0.40 expiring March 25, 2027.