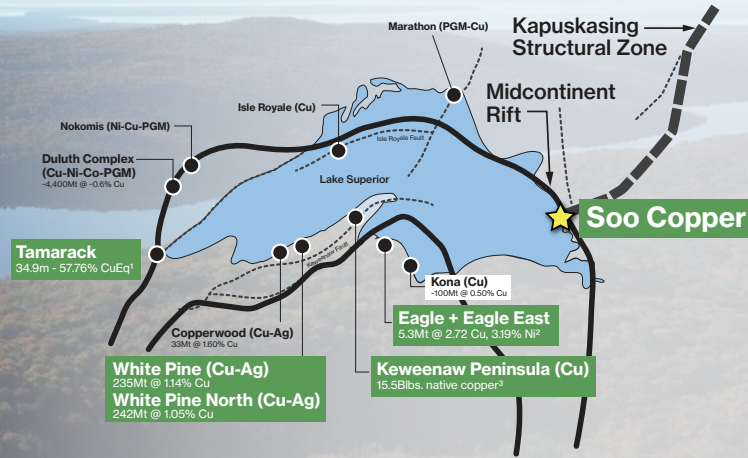


Unlocking Canada's Copper Potential



PROJECT HIGHLIGHTS

SCALE

Bornite in outcrop across 6km corridor within 30km copper mineral system

GRADE

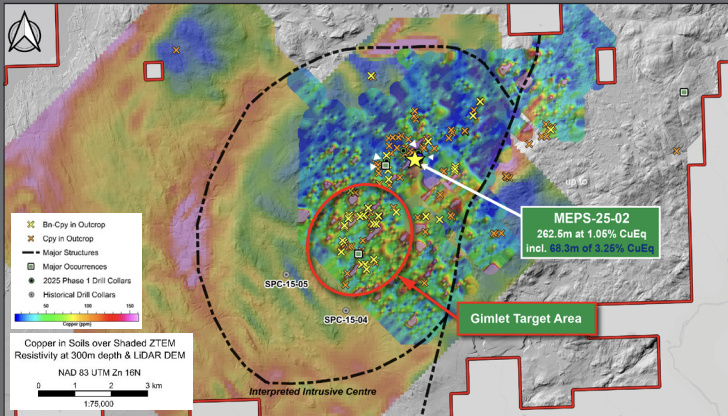
Bornite rich discovery hole grading 68.5m at 3.25% CuEq within 262m at 1.05% CuEq

INFRASTRUCTURE

20km from rail and major highway; 1hr north of Port of Sault Ste. Marie

JURISDICTION

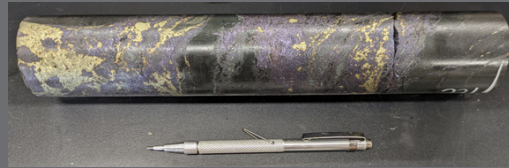
Ontario, Canada – top-tier critical-metals jurisdiction



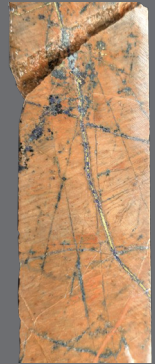
2025 Exploration Program Confirms Discovery and Regional-Scale Potential



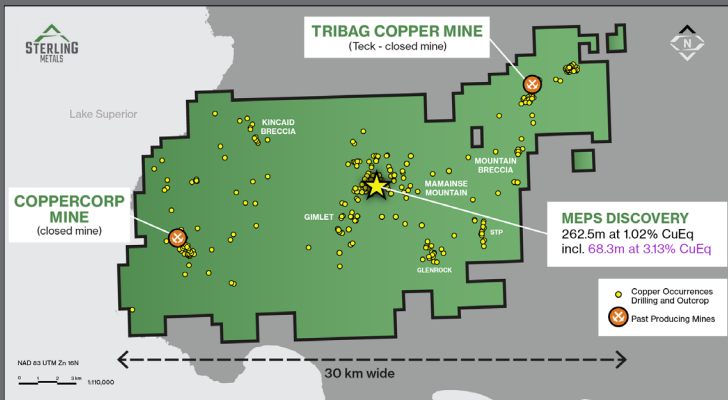
MEPS-25-02: 219.85 m, Bornite-chalcopryrite-gold, 23.1% Cu, 196 g/t Au, 168 g/t Ag over 0.6 m



MEPS-25-02: 220.75 m, Bornite-chalcopryrite, 33% Cu, 0.342 g/t Au, 210 g/t Ag over 0.55 m



216.2m, chalcopryrite and bornite copper mineralization in GFP porphyry, 0.847% Cu, 0.054g/t Au and 7.1g/t Ag over 0.8 m



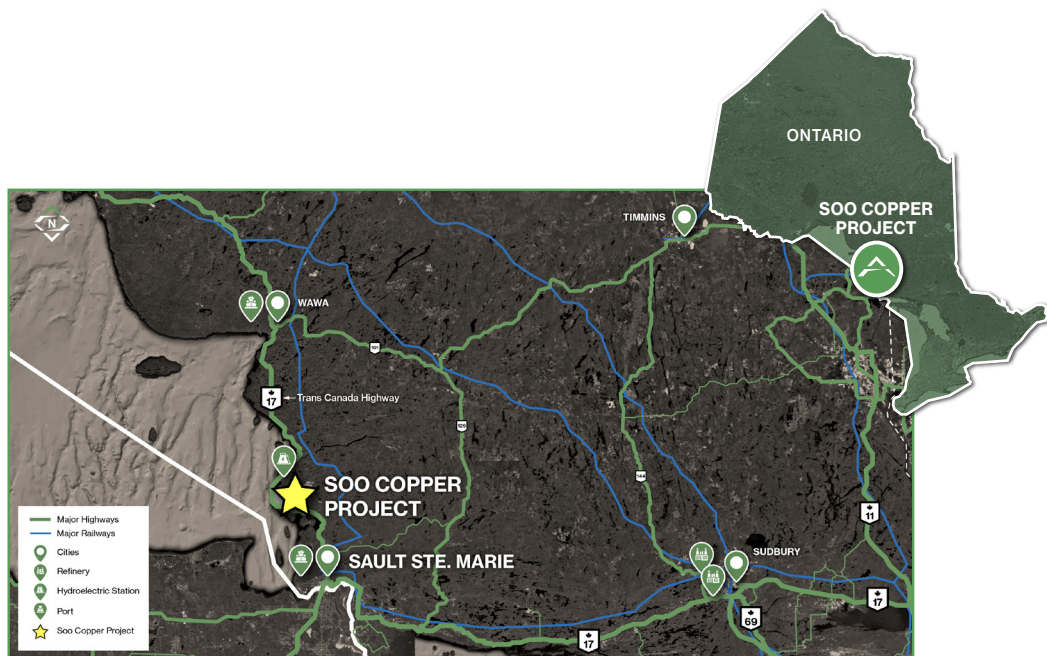
Soo Copper - 30 km copper mineral system

MEPS DISCOVERY - HIGHEST COPPER AND GOLD GRADES ENCOUNTERED TO DATE AT SOO COPPER

- 2025 drilling outlined 1km zoned porphyry system including a higher-grade bornite core within a continuous 400 m × 400 m copper-mineralized zone
- 6 holes from 2025 drilling within bornite zone pending
- 2026 minimum 20,000 m drill program underway

CANADA ADVANTAGE

- ✓ **Established infrastructure:**
 Road, power, rail, and port access lower exploration and operating costs.
- ✓ **Federal support is strong:**
 Prime Minister Mark Carney has identified copper as a key strategic asset, aligning the project with national priorities.
- ✓ **Provincial backing is clear:**
 Premier Doug Ford is committed to unlocking Ontario's critical mineral supply chains and supporting the mining community in Sault Ste. Marie.



EXCEPTIONAL TRACK RECORD

BOARD OF DIRECTORS

Mark Goodman Chairman
 Mathew Wilson Director
 Stephen Keith Director
 Dr. Stephen Piercey Technical Advisor
 Richard Patricio Advisor
 Mark Raguz Advisor

MANAGEMENT

Mathew Wilson CEO
 Dennis Logan CFO
 Dr. Neil O'Brien Chief Geologist
 Jeremy Niemi SVP Exploration and Evaluation
 Chris Irwin Corporate Secretary



CONTACT

Tel: (416) 643-3887
 info@sterlingmetals.ca
 www.sterlingmetals.ca

@sterlingmetals
 Sterling Metals Inc.

Scan to Visit Website:



HISTORICAL HIGHLIGHTS NOTES:

¹ Drill result reported by Talon Metals: Talon Metals Reports Record Assays From Historic Tamarack Discovery Grading 57.76% Copper Equivalent Or 23.88% Nickel Equivalent Over 34.9 Combined Meters - Talon Metals Corp.
² As reported in the Technical Report entitled "NI-43101 Technical Report on the Eagle Mine, Michigan, USA", dated December 31, 2022, prepared by WSP Golder.
³ Paul Brandes - Geology of the Keweenaw Peninsula, Michigan.
⁴ Perello J., Sillitoe R.H., and Creaser R.A., 2020. Mesoproterozoic porphyry copper mineralization at Mamainse Point, Ontario, Canada in the context of Midcontinent rift metallogeny, Ore Geology Reviews 127.
 This estimate is a "historical estimate" as defined under NI 43-101. A Qualified Person has not done sufficient work to classify the historical estimate as current mineral resources and Sterling Metals is not treating the historical estimate as current mineral resources.

CAUTIONARY NOTE REGARDING FORWARD-LOOKING INFORMATION

This fact sheet is intended to be strictly informational. Sterling Metals Corp. ("Sterling Metals" or the "Company") reserves the right, at its sole discretion, to modify all or any part of this presentation without any liability or notification to any person. This presentation includes statements which may be considered forward-looking. These forward-looking statements are based largely on the expectations of management of the Company as at the date hereof and are subject to uncertain events and circumstances which are beyond the control of the Company. Actual results could differ materially from those anticipated. You acknowledge that any reliance on or use by you of this information shall be at your own risk. In no event shall the Company, its directors, officers, employees, agents or advisors be liable for any damages of any kind arising out of or relating to the use of this presentation, including, but not limited to, any loss of income or profits, incidental, special, indirect or consequential or any similar losses or damages, whether or not advised of the possibility of damages, and on any theory of liability, arising out of or in connection with the use of the information contained herein. This document does not constitute, nor should be construed as, an offer or solicitation of an offer for the purchase of any securities of the Company, nor investment advice or an offering memorandum. Readers should review all of the Company's public disclosure including the technical report on its property. No securities commission or similar authority or stock exchange in any jurisdiction has in any way passed on any of the information contained herein.

STOCK PERFORMANCE



CAPITAL STRUCTURE

Share Price (Feb. 23, 2026)	C\$1.67
52-Week Low/High	C\$0.24 - C\$3.06
Basic Shares Outstanding ¹	45.9M
Options ²	1.9M
Warrants ³	8.8M
RSUs	1.3M
FD Shares Outstanding	58.0M
Basic Market Capitalization	C\$76.7M
Cash & Cash equivalents (Sept. 30, 2025)	-C\$2.0M
Subsequent Financing (Completed Nov. 25, 2025)	-C\$14.0M
Debt	None

1. Based on public disclosure as of September 30, 2025, and includes the private placement completed on November 26, 2025, consisting of 5,244,517 units and 2,666,662 flow-through units.
 2. Based on public disclosure as of September 30, 2025, with an average exercise price of \$0.40.
 3. Includes existing warrants: 2,966,000 warrants and 30,000 broker warrants at \$0.40 expiring March 25, 2027; 1,655,362 warrants and 167,915 broker warrants at \$0.50 expiring July 25, 2027. Also includes 2,622,258 warrants and 1,333,331 warrants at \$3.00 issued under the private placement completed November 26, 2025 expiring November 25, 2027.